



Anhui Coolnet Data Power Co.,LTD

Add:Building F1, Xingmengyuan Mansion, High-tech Zone, Hefei City, Anhui Province, China
Tel: +86-0551-65568275 Fax:+86-0551-65568275
Website: www.coolnetpower.com

The name of Coolnet and logo are the registered trademark only for Coolnet.
©2024by Coolnet company

CABINET AIR CONDITIONER

**Outdoor Integrated Power
Supply System Cabinet**

CABINET AIR CONDITIONER

Outdoor Integrated Power Supply System Cabinet

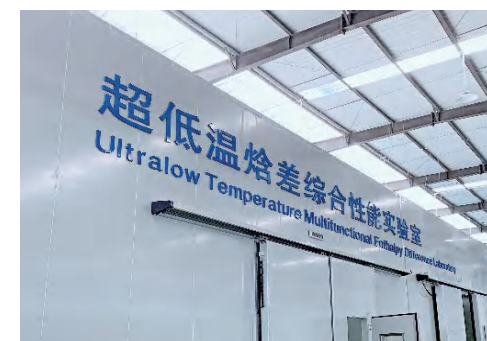
COMPANY PROFILE

Coolnet focuses on the R&D, production, and application of data center integrated solutions. As technical consulting, product supply, system integrator, and service provider, it is committed to serving customers in the fields of communication equipment rooms, data centers, smart construction, and energy management.

Our solutions include data center temperature, humidity, and energy-saving solutions, small and medium-sized computer room temperature control solutions, micro-module data center solutions, micro-module cabinet solutions, container, and modular data center solutions, communication outdoor cabinet temperature control and energy saving Solutions, cabinet temperature and humidity, and energy-saving solutions.

Has rich research and manufacturing experience in the field of data center equipment, with world-class laboratories, production testing equipment, and a complete line of key equipment rooms. And passed the ISO9001 quality management system certification, ISO14001 environmental management system certification, and the products have passed CE certification, CCC certification, CQC certification, CRAA quality certification, etc.

We are committed to "paying attention to customer needs and realizing customer value" and establishing a win-win cooperation pattern with customers. To become your most trustworthy, most grateful, most professional, most practical, and most reliable partner with the best vision. We will "make every effort to provide value for money products and services to make customers more competitive", and continue to explore and innovate.



CABINET AIR CONDITIONER

INTRODUCTION

COOLNET Cabinet air conditioner is actively cooling with compressor, and it will remove the heat inside the cabinet to the outside. It also can keep the dust and heat outside the cabinet, avoiding problems from using fan. The inside cabinet can be maintained at an ideal temperature for electrical components which effectively guarantees the stability of the electronic equipment and improves the reliability of the whole system.

APPLICATIONS

- Suitable for outdoor base stations
- ETC toll stations
- Small and medium-capacity switching offices
- Network wave communications
- Satellite communications
- Data communications, data room
- Other application fields



CN-OAC CABINET AIR CONDITIONING

INTRODUCTION

The CN-OAC cabinet air conditioners are designed to achieve heat absorption and cooling through compression refrigeration. The conventional input voltage is 220V, 50/60Hz, while 110V can be customised according to the requirements of different countries, and the cooling capacity can be selected from 300W to 15000W.



CHARACTERISTICS

1. Compact structure, reasonable design and easy maintenance;
2. Cooling capacity ranges from 300W to 5000W.
3. Widely used for outdoor telecom cabinets, battery cabinets, electric cabinets and industry control cabinets etc.
4. The protective level is IP55, can run at high ambient environment 55°C .
5. Voltage range: AC220v, 50Hz/60Hz; AC110v, 60Hz; DC-48V.
6. Mounting: door, side and top mounted available.
7. Digital temperature controller and high precision of temperature control.
8. CE certified, which can meet EU RoHS requirements.



TECHNICAL DATA SHEET

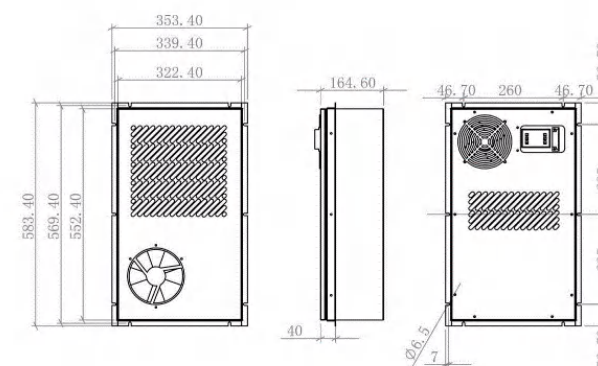
Model	CN-OAC	0300	0500	0600	1000	1500	2000	3000	3500	5000	7500
Cooling capacity(w)		300	500	600	1000	1500	2000	3000	3500	5000	7500
Heating Capacity(Optional)(W)		500	500	500	1000	1000	1000	1000	1000	3000	3000
Rated Current(A)		0.77	0.84	1.2	1.93	2.75	3.3	5.6	6.6	3.3	3.6
Power(w)		170	185	265	426	605	745	1240	1460	2200	2400
Inter air flow(M³/h)		120	120	180	230	230	560	720	720	2000	2100
External air flow(M³/h)		260	260	450	560	560	950	1380	1380	2300	2500
Communication Port	RS-485,MODBUS-RTU communication protocol										
Working voltage(w)	1PH,220V+10%,50HZ/60Hz									3PH,380V+10%,50HZ	
Working temperature	R134A(-40°C-55°C)R407C(-20C-50°C°C)										
Refrigerant	R134A									R22/R407C	
Protection level	IP55										
Control mode	LED display										
Compressor type	Fully enclosed rotor compressor										
Evaporator and condenser	Copper tube aluminum fin hydrophilic aluminum foil										
Fan type	Tilt back centrifugal fan/outer rotor motor										
Heating type	PTC										
Noise(dB)	56	56	60	63	63	68	70	70	68	68	
Weight(kg)	14	15	18	27	27	37	53	48	97	98	
Dimension(mm)	583*353*165		692*455*155	791*491*187		1100*480*188	1208*550*220	1200*540*220	1640*672*300		
Installation way	Door mounted										

Description.

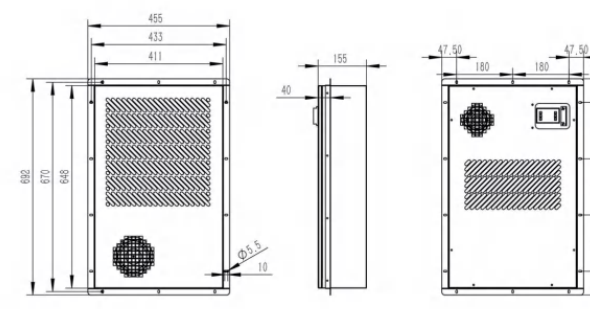
1. The test working conditions are 35°C dry bulb humidity and 26°C wet bulb temperature on the inside of the cabinet and 35°C dry bulb temperature on the outside of the cabinet.

2. The above product parameters are standard models, for larger cooling capacity or customised products, please call our company for details.

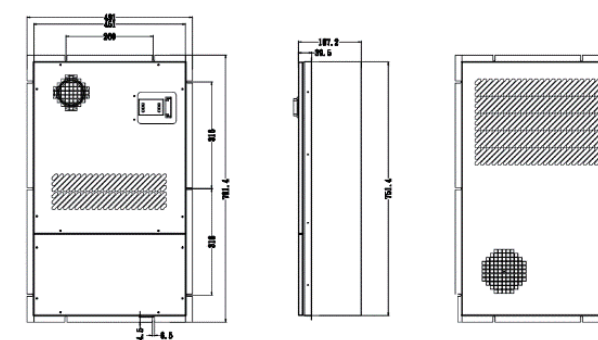
DIMENSION



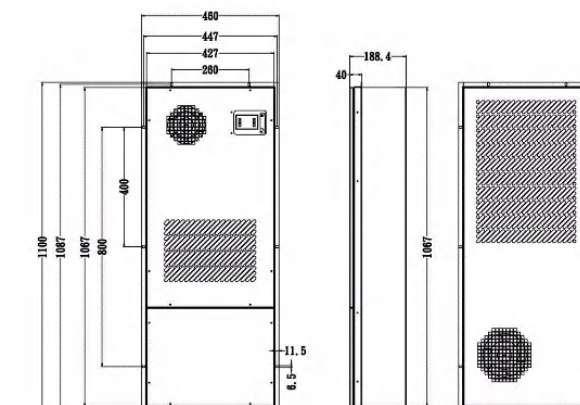
CN-OAC0300/ CN-OAC0500



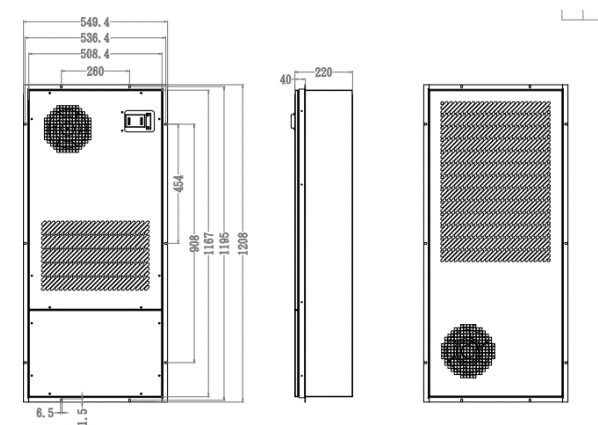
CN-OAC0600



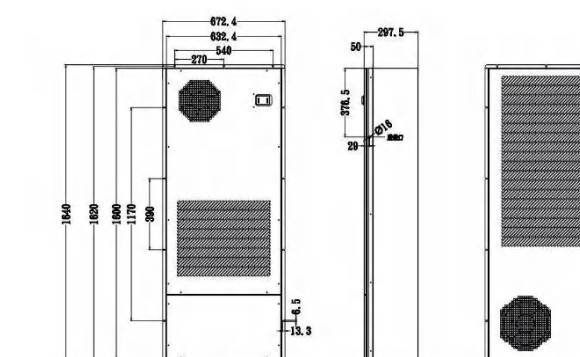
CN-OAC1000/CN-OAC1500



CN-OAC2000



CN-OAC3000



CN-OAC5000

CN-ODC CABINET AIR CONDITIONING

INTRODUCTION

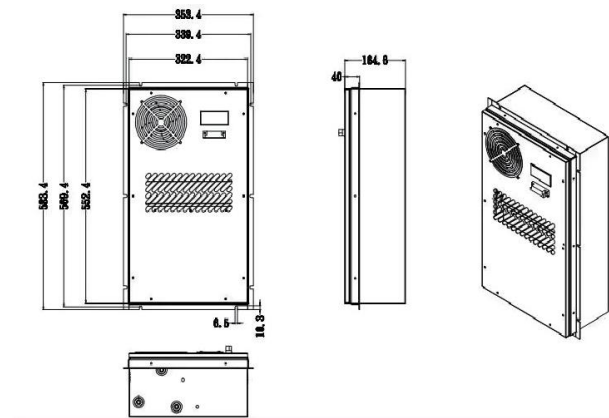
The CN-ODC cabinet air conditioner is designed to achieve heat absorption and cooling by means of compressed cooling. With an input voltage of 48V DC, it is widely used in remote and unstable voltage areas and is available in a range of cooling capacities from 300W to 3000W.



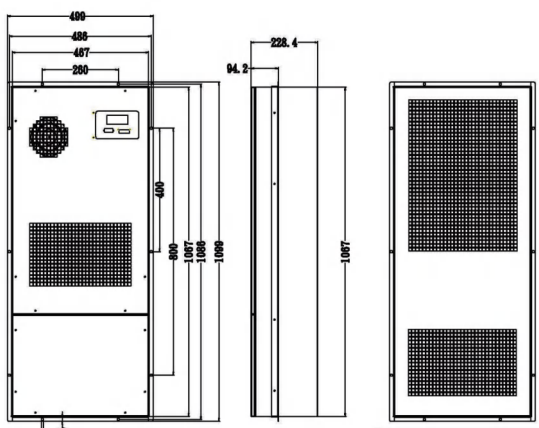
CHARACTERISTICS

- 1. Structure of compact and reasonable design, including door-mounted, side-mounted and top-mounted air conditioning series.
- 2. Input voltage range: DC48V.
- 3. The protection level of internal and external circulation reaches IP55 level, with dustproof and waterproof function, so it can be installed in indoor and outdoor use.
- 4. Can be operated under high temperature working conditions of 55°C/55°C.
- 5. Digital temperature controller with high precision temperature control.
- 6. The product meets the requirements of EU RoHS and is CE certified.

DIMENSION



CN-ODC0300 / CN-ODC0500



CN-ODC2000

TECHNICAL DATA SHEET

Model CN-ODC	0300	0500	1000	1500	2000	3000	4000
Cooling capacity(w)	300	500	1000	1500	2000	3000	4000
Heating Capacity	500	500	500	500	1000	1000	1000
Rated Current(A)	2.7	4.48	6.25	8.23	12	19.4	24.6
Power(W)	130	215	300	395	580	932	1180
Inter air flow(M³/h)	150	150	320	400	720	890	1100
External air flow(M³/h)	217	217	640	800	1080	1215	1500
Communication Port	RS-485,MODBUS-RTU communication protocol						
Working voltage(w)	DC48V						
Working temperature	R134A(-40C-55℃)						
Refrigerant	R134A						
Protection level	IP55						
Control mode	LED display						
Compressor type	Fully enclosed rotor compressor						
Evaporator and condenser	Copper tube aluminum fin hydrophilic aluminum foil						
Fan type	Tilt back centrifugal fan/outer rotor motor						
Heating type	PTC						
Noise(dB)	60	60	63	63	68	70	70
Weight(kg)	12.5	12.5	27	27	37	63	63
Dimension(mm)	583*353*165		491*188*791		467*228*1067	549*220*1208	
Installation way	Door mounted						

HE-X SERIES DC PLATE HEAT EXCHANGERS

INTRODUCTION

Plate heat exchanger is a device that introduces outdoor natural cold source to exchange heat with limited power consumption. When there is a large temperature difference, the device will effectively exchange heat between hot air inside and cool air outside the cabinet through the aisle of multilayer aluminum heat sink fins, which makes the cabinet be an enclosed system with constant temperature so that equipment inside the cabinet can work normally.



CHARACTERISTICS

- 1. Enclosed air circuit cooling system design, which makes the inside air and outside air isolated and effectively avoids contamination from outside.
- 2. Avoid dew formation from too cold.
- 3. Compact structure and convenient installation & maintenance.
- 4. It can be remote monitored.
- 5. Voltage range: AC220v, 50Hz/60Hz; AC110v, 60Hz; DC-48V.
- 6. The main components are international brands which greatly improves the reliability of the system.



TECHNICAL DATA SHEET

Model		Unit	CN-HEX50	CN-HEX60	CN-HEX80	CN-HEX100	CN-HEX120	CN-HEX150	CN-HEX200
Heat Transfer		V	50	60	80	100	120	150	200
Rated Voltage		(V/ph/Hz)	220/1/50	220/1/50	220/1/50	220/1/50	220/1/50	220/1/50	220/1/50
Rated Power		W	120	190	260	260	330	330	360
Air Circuit		m³/h	400	500	800	900	1100	1300	2000
Weight		KG	20	20	25	25	28	34	38
Dimension	H	mm	750	750	1177	1177	1237	1358	1520
	w	mm	411	411	410	410	410	555	600
	D	mm	118	118	154	154	154	195	198

TE-H SERIES SEMICONDUCTOR AIR CONDITIONERS

INTRODUCTION

Thermoelectric cooler is a kind of cooling equipment consists of Peltiel material. The inner sealed circuit is composed of the two different metal leads, X and Y. When it is on power, heat on cool end is transferred to hot end, which leads to the temperature drop at cool end and temperature rise at hot end. The switch between hot end and cool end can be achieved by changing electrode.



CHARACTERISTICS

- 1. It adopts Peltiel material to realize electronic cooling. Mini-shape and light.
- 2. Without compressor and Freon. Environment-friendly, no vibration, no leak.
- 3. Using Environment-friendly materials, which meets RoHs requirements.
- 4. No limitation about installation, it can be applied to many occasions.
- 5. Normal working ambient temperature is from -20°C to + 50°C .
- 6. Using high density and thermal insulation foam to fill the cool end and hot end of the cooling equipment.
- 7. The temperature of Overheat protector of radiator at hot end is setted at +75°C ±5°C .
- 8. Applicable to the sealed, vibrating, and rotated occasions where compressor cannot work.

TECHNICAL DATA SHEET

Model		Unit	CN-TEH100W	CN-TEH150W	CN-TEH200W	CN-TEH300W
Cooling capacity		W/K	100	150	200	300
Rated Voltage		V	DC-48V	DC-48V	DC-48V	DC-48V
Rated Power		W	136	196	276	403
Noise		dB	<60	<62	<64	<66
Weight		(Kg)	5	6	8	8
Dimension	H	mm	250	300	400	400
	W	mm	133	160	186	186
	D	mm	159	159	212	212